

# NORDMENDE

## TUMBLE DRYER

USER MANUAL

**TDV70WH**

Read these instructions carefully before using your dryer and keep it carefully.

If you follow the instructions, your appliance will provide you with many years of good service.

SAVE THESE INSTRUCTIONS CAREFULLY



CAUTION: HOT SURFACE!



CAUTION: RISK OF FIRE!

# CONTENTS

---

## SAFETY INSTRUCTIONS

■ Safety Instructions .....	2
-----------------------------	---

## INSTALLATION

■ Product Description .....	7
■ Installation .....	7

## OPERATIONS

■ Quick Start .....	9
■ Before Each Drying .....	10
■ Control Panel .....	11
■ Drying Programmes Table .....	13

## MAINTENANCE

■ Cleaning and Care .....	15
■ Trouble Shooting .....	16
■ Technical Specifications .....	17
■ Product Fiche.....	18

# SAFETY INSTRUCTIONS

---

- The appliance is not intended for use by persons (including children) with reduced physical, sensory or mental capabilities, or lack of experience and knowledge, unless they have been given supervision or instruction concerning use of the appliance by a person responsible for their safety.
- Children should be supervised to ensure that they do not play with the appliance. In EN standard countries, this appliance can be used by children from 8 years and above and persons with reduced physical, sensory or mental capabilities or lack of experience and knowledge if they have been given supervision or instruction concerning use of the appliance in a safe way and understand the hazards involved.
- Children are not to play with the appliance, leaning and user maintenance shall not be made by children without supervision.
- The tumble dryer is not to be used if industrial chemicals have been used for cleaning.
- The lint trap has to be cleaned frequently.
- Lint must not to be allowed to accumulate around the tumble dryer.
- Do not dry unwashed items in the tumble dryer.
- Items that have been soiled with substance such as cooking oil, acetone, alcohol, petrol, kerosene, spot removers, turpentine, waxes and wax removers etc should be washed in hot water with a extra amount of detergent before being dried in the tumble dryer.
- Items such as foam rubber (latex), shower caps, waterproof textiles, rubber backed articles and clothes or pillows fitted with foam rubber pads should not be dried in the tumble dryer.

## SAFETY INSTRUCTIONS

---

- Fabric softeners, or similar products, should be used as specified by the fabric softener instructions.
- The final part of a tumble dryer cycle occurs without heat (cool down cycle) to ensure that the items are left at a temperature that ensures that the items will not be damaged.

### **Warning!**

Never stop a tumble dryer before the end of the drying cycle unless all items are quickly removed and spread out so that the heat is dissipated.

- The exhaust air must not be discharged into a flue which is used for exhausting fumes from other appliances burning gas or other fuels.
- The appliance must not be installed behind a lockable door, a sliding door or a door with a hinge on the opposite side, to that of the tumble dryer, or in such a way that a full opening of the tumble dryer door is restricted.
- Oil-affected items can ignite spontaneously, especially when exposed to heat sources such as in a tumble dryer. The items become warm, causing an oxidation reaction in the oil. Oxidation creates heat. If the heat cannot escape, the items can become hot enough to catch fire. Piling, stacking or storing oil-affected items can prevent heat from escaping and so create a fire hazard.
- The appliance should not be overturned during normal use or maintenance.
- Remove all objects from clothing pockets such as lighters and matches or sharp objects.

## SAFETY INSTRUCTIONS

---

- For appliances with ventilation openings in the base, please ensure that openings are not obstructed by carpet or anything else.
- If the power cable is damaged, it must be replaced by the manufacturer, its service agent or similarly qualified persons in order to avoid hazards.
- Children of less than 3 years should be kept away unless continuously supervised.
- Plug must be accessible after installation.

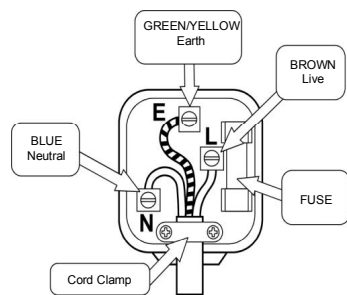
# SAFETY INSTRUCTIONS

## • Power supply and grounding

The dryer employs alternating current with the rated voltage and frequency. When the voltage fluctuates between 6% of rated voltage, the dryer can work normally. A special power socket with a capacity  $\geq 10A$  for the dryer is advised to be used on the dryer for convenience and safety. The method of connection of the socket is as the image below. To be safe, please make improvements as soon as possible according to the rules and suggestions mentioned above.

### ⚠ Warning!

The socket and the grounding wire must be installed by an electrician to prevent incorrect installation or use of the socket and to guarantee the safety of use of electricity. If there is no connection of the grounding wire and the neutral wire, the cabinet will be charged, which is likely to cause the danger of electric shock.

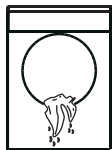


## • Precautions

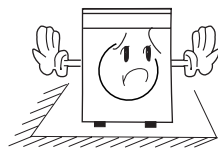
Install or store where it will not be exposed to temperatures below freezing or exposed to water or weather, which could cause permanent damage and invalidate the warranty.



Thoroughly spin the laundry in washing machine. High spin speed can reduce the drying time and save energy consumption.



Keep the area around the exhaust opening and adjacent surrounding areas free from the accumulation of lint, dust and dirt. An obstructed port might reduce the airflow.



Make sure combustible sprays are not close to dryer when it is working. If there is a gas leak, do not touch the plug or press start/pause on the control panel.

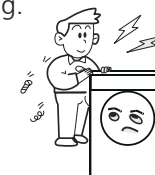


# SAFETY INSTRUCTIONS

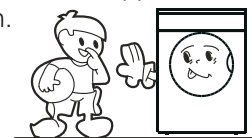
Do not wash or dry articles that have been cleaned in, washed in, soaked in or spotted with combustible or explosive substances (such as wax, oil, paint, gasoline, degreasers, dry-cleaning solvents, kerosene, etc).



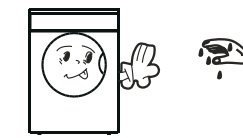
Never attempt to operate this appliance if it is damaged, malfunctioning, partially disassembled or has missing or broken parts, including a damaged cord or plug.



Do not allow children on or in the appliance. Close supervision of children is necessary when the appliance is used near children.



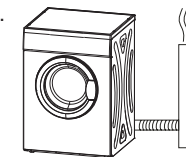
Do not operate the appliance with wet hands.



Do not store plastic, paper or clothing that may burn or melt on top of the dryer during operation.



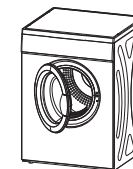
The exhaust air must not be discharged into a flue which is used for exhausting fumes from appliances that burning gas or other fuels.



Do not dry articles containing rubber, plastic or similar materials such as padded bras, tennis shoes, galoshes, bath mats, rugs, bibs, baby pants, raincoats, plastic bags or pillows that may melt or burn. Some rubber materials, when heated, can under certain circumstances produce fire by spontaneous combustion.

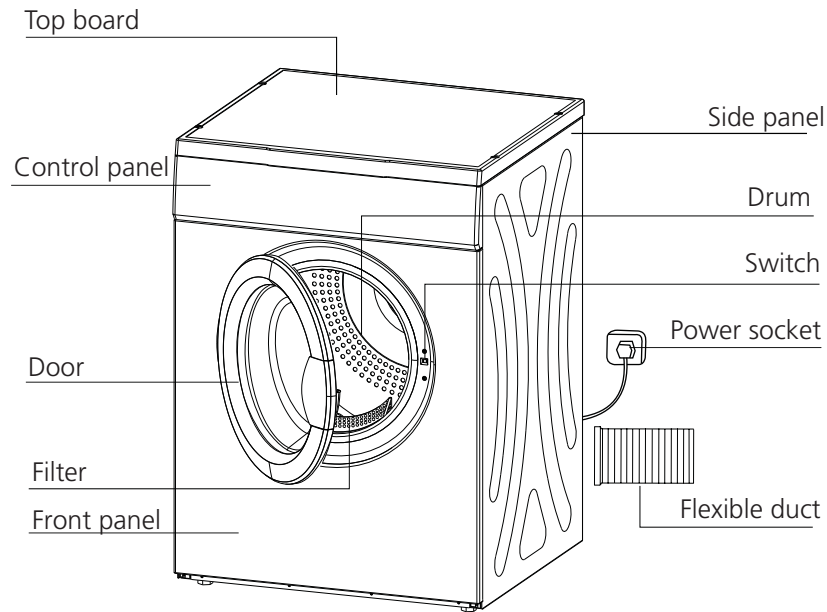


The door can be opened only after the cool down programme has completed. Do not open the door before this programme has finished to avoid being scalded by hot steam.



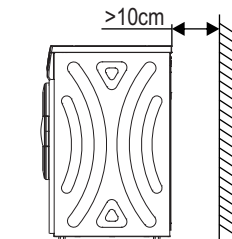
# INSTALLATION

## ■ Product Description



## ■ Installation

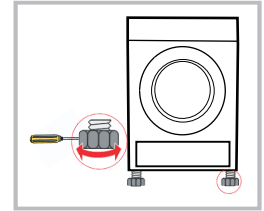
- The dryer should be placed in a ventilated area and not less than 10cm distance away from the wall. It is suggested that there are no obstacles within 1.5m in front of dryer and for it to be kept ventilated.



# INSTALLATION

## • Level Adjusting

Once in its' permanent operating position, check that the dryer is absolutely level with the aid of a spirit level. If it is not, adjust the feet with a tool.



## 🔧 Note!

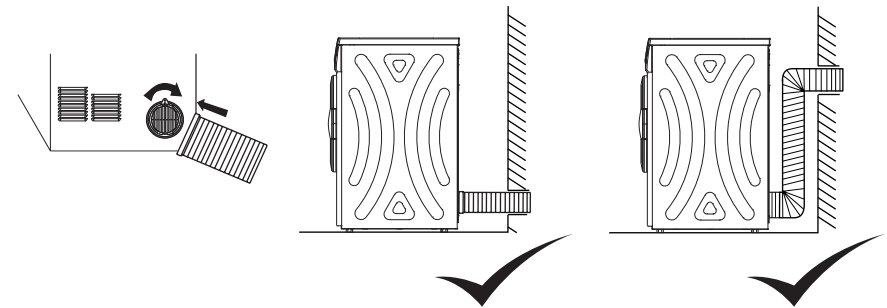
If the dryer cannot be placed flat (the lean angle may be no more than 2°, the dryer may work when unbalanced or but can also stop working sometimes.

### Notice when installing:

- Do not install the dryer in the open air or a place that can be easily damaged by rain;
- Do not place the back of dryer near a curtain or any fabric;
- Do not place the dryer near gas or flammable materials.

### • Flexible tube fixing:

- Connect one end of the flexible tube to the back vent and fix it securely.
- Connect the opposite end of the flexible tube to the external wall for the hot air to escape outdoors.
- Please refer to the below pictures for the correct assembly.

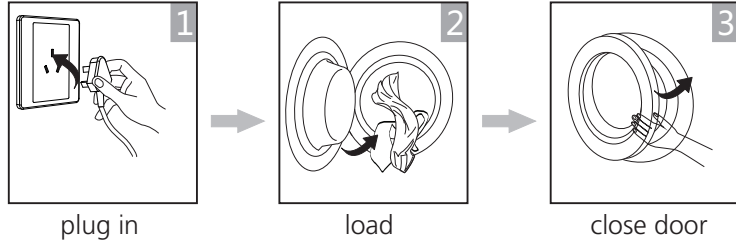


# OPERATIONS

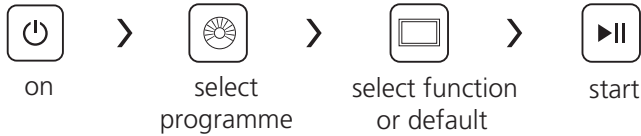
## ■ Quick Start

### 🔔 Note!

Before using, please make sure the dryer is installed properly.

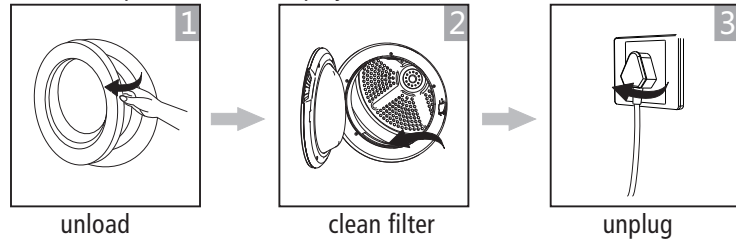


## Drying



## After Drying

Buzzer beep or "0:00" on display.



# OPERATIONS

## ■ Before Each Drying

1. Before drying, thoroughly spin the laundry in washing machine. High spin speed can reduce the drying time and save energy consumption.
2. For uniform drying result, sort the laundry according to fabric type and drying programme.
3. Before drying, please close zips, hooks and eyelets, tie fabric belts, etc.
4. Do not over dry the clothes, because over dried clothes can easily get creases.
5. Do not dry the articles containing rubber or similar elastic materials.
6. The door can be opened only after the cool down programme of the dryer has completed, this is to avoid being scalded by hot steam or the hot drum.
7. Clean the lint filter and empty container after each use to avoid extension of drying time and energy consumption.
8. Do not dry these clothes after dry-clean process.

Below is a reference weight of dry clothes (each)

Mixed-fabric clothes (about 800g)	Jacket (about 800g cotton)	Jeans (about 800g)	Towel quilt (about 900g cotton)
Single bedsheet (about 600g cotton)	Work clothes (about 1120g)	Sleepwear (about 200g)	Long sleeve shirt (about 300g cotton)
Short sleeve shirt (about 180g cotton)	Short pants (about 70g cotton)	Socks (about 50g mixed-weave)	

### 🔔 Note!

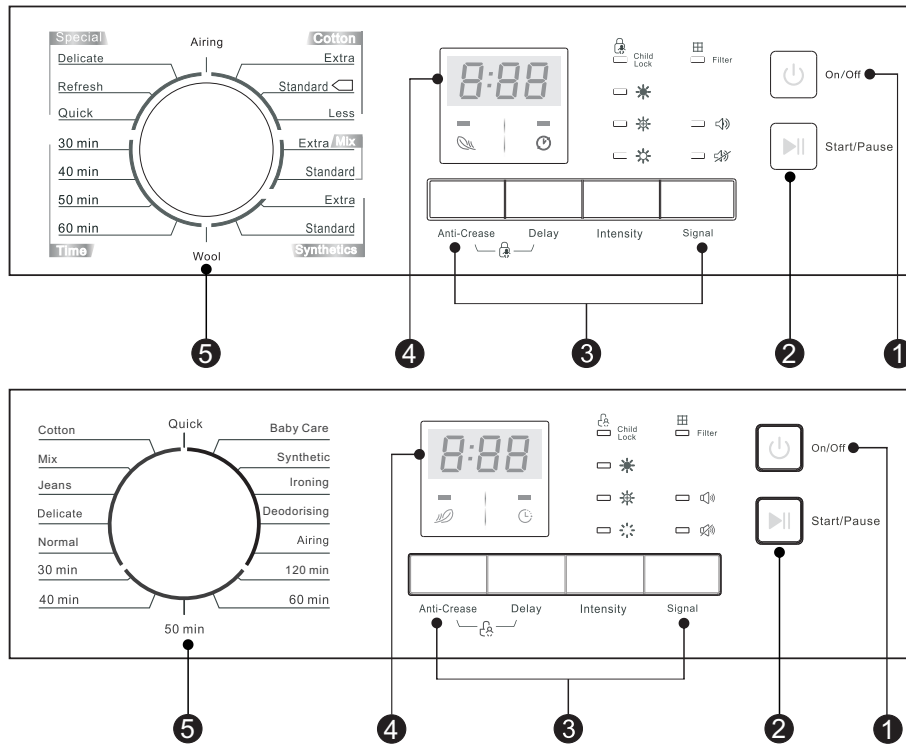
- Never overload.
- Do not use the dryer for textile that have not been spun dry and are super saturated in water. The dryer could be damaged and can even cause fire.
- Not suitable for silk or woolen textiles.

Please check the labels on your clothing and follow the drying instructions. Do not dry in the dryer if the labels says not to do so.

Dry	Normal	Not tumble dry normal	Do not dry
Line dry / hang to dry	Drip dry	Dry flat	In the shade
Dry clean	Do not dry clean	Dry clean normal cycle with any solvent	Dry clean normal cycle petroleum solvent only

# OPERATIONS

## Control Panel



### 1 On/Off

Product is switched on or off.

### 2 Start/Pause

Press the button to start or pause the dryer cycle.

### 3 Specialty function

These buttons are used for setting additional functions.

### 4 Display

This display shows the setting, estimated remaining time and status messages of your dryer.

### 5 Programmes

Different dryer cycle can be selected according to the user's needs to make the clothes have more effective drying results.

# OPERATIONS

## Signal

Press the button to select the on or off signal function. The buzzer will prompt from the dryer when finishing the cycle. Press the **【On/Off】** button and pull out the power cable.

## Intensity

Press the button to select adjust the dryness level of the laundry. The level has three grades \* \* \*. The drying time increases 3 minutes in every grade.  
1. The intensity function can be activated only before the programme start.  
2. Press the **【Intensity】** button repeatedly to select the drying time.

## Delay

Press the button to select delay clothes drying within 24 hours. You can press this key continuously; it can be selected within 1-24 hours .

## Anti-Crease

Press the button to select the function, the anti-crease operation time is 30 minutes (default) or 120 minutes (selected). The **【Anti-Crease】** light will illuminate when the anti-crease function is selected. This function prevents the laundry from excess creases.

## Child Lock

Pressing the **【Anti-Crease】** and **【Delay】** buttons simultaneously for over 3 seconds to start child lock function.

### Note!

- Clean the filter, cabinet and inner tube.
- Clean the filter when the "Filter" light is flashing, after the dryer has stopped.
- ☐ this symbol is the energy efficiency test programme "standard cotton programme", which is most suitable to dry a normal cotton load at rated load capacity.

## ■ Drying Programmes Table

Programme	Weight (max)		Application/Properties	Delay	Intensity
	7.0kg				
For cottons and coloureds made of cotton or linen.					
Cotton	Extra	7.0kg	To dry cotton pieces of clothing. Drying level: extra dry.	Y	Y
	Standard		To dry cotton pieces of clothing. Drying level: cupboard dry.		
	Less		To dry cotton pieces of clothing. Drying level: less dry.		
If you can not determine what the clothing's material is, please choose Mix.					
Mix	Extra	7.0kg	To dry mix pieces of clothing. Drying level: extra dry.	Y	Y
	Standard		To dry mix pieces of clothing. Drying level: cupboard dry.		
For non-iron washing made of Synthetics and blended fabrics, cotton.					
Synthetics	Extra	3.0kg	To dry synthetics pieces of clothing. Drying level: extra dry.	Y	Y
	Standard		To dry synthetics pieces of clothing. Drying level: cupboard dry.		
Time	30 min	—	Time 30 min.	Y	N
	40 min		Time 40 min.		
	50 min		Time 50 min.		
	60 min		Time 60 min.		
Special	Delicate	—	To dry delicate laundry that is suitable for drying or laundry which is advised to be hand-washed at a lower temperature.	Y	N
	Refresh		Remove the smell for the long-laid clothes.		
	Quick		Rapid warm for the long-laid clothes.		
Airing	—	To air clothes without blowing hot air.	Y	N	
Wool	—	For fluffy and fresh wool clothing (can not be used for drying pure wool clothing), when the cycle is done, take out the clothes at once, let them dry in the air.	Y	N	

Programme	Weight (max)		Application/Properties	Anti-Crease	Delay	Signal
	7.0kg					
Quick	0.6kg	7.0kg	Rapid warm for the long-laid clothes.	Y	Y	Y
Cotton	0.6kg	7.0kg	To dry cotton pieces of clothing. Drying level: standard dry.	Y	Y	Y
Mix	7.0kg	7.0kg	To dry mix pieces of clothing. Drying level: extra dry. If you can not determine what the clothing's material is, please choose Mix.	Y	Y	Y
Jeans	3.0kg	3.0kg	To dry jeans or clothes that are spun at high speeds in the washing machine.	Y	Y	Y
Delicate	0.6kg	0.6kg	To dry delicate laundry that is suitable for drying or laundry which is advised to be hand-washed at a lower temperature.	Y	Y	Y
Normal	7.0kg	7.0kg	To dry mix pieces of clothing. Drying level: standard dry. If you can not determine what the clothing's material is, please choose Normal.	Y	Y	Y
30 min	—	—	Time 30 min.	Y	Y	Y
40 min	—	—	Time 40 min.	Y	Y	Y
50 min	—	—	Time 50 min.	Y	Y	Y
60 min	—	—	Time 60 min.	Y	Y	Y
120 min	—	—	Time 120 min. It is recommended to choose this programme to dry bed sheets, quilt covers, or other big loads.	Y	Y	Y
Airing	—	—	To air clothes without blowing hot air.	Y	Y	Y
Deodorising	—	—	Remove the smell for the long-laid clothes.	Y	Y	Y
Ironing	7.0kg	7.0kg	To dry cotton pieces of clothing. Drying level: applicable to iron.	Y	Y	Y
Synthetic	3.0kg	3.0kg	To dry synthetics pieces of clothing. Drying level: standard dry. For non-iron washing made of synthetic and blended fabrics, cotton.	Y	Y	Y
Baby Care	1.0kg	1.0kg	To dry baby cotton pieces of clothing. Drying level: standard dry.	Y	Y	Y

### Note!

- The programmes above are only recommended for using, users can choose the appropriate programme according to their personal habits. Thick and multi-layered fabrics e.g. bedlinen, jeans, jackets etc, are not easy to dry, it is advisable to choose the jeans programme and maximum drying intensity level.

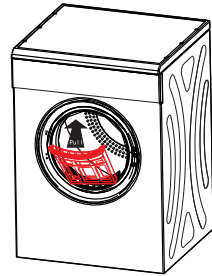


## MAINTENANCES

### ■ Cleaning And Care

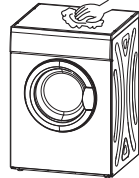
#### Filter clean

- Clean the lint filter after each use. Remove it by pulling straight up.
- Clean the filter by using a cloth or your fingers, to wipe clean. Install filter
- If the filter is cleaned with a damp cloth or water, please allow to dry before installation.



#### Cleaning cabinet and inner tube

- Use a soft damp cloth to wipe clean the cabinet and inner tube.
- Do not to rinse directly under water.
- Do not use a scouring / abrasive sponges.
- Do not use chemical based or alcohol wipes.
- Leave the dryer door open to dry cleaning the inner tube.



#### Safety reset

- These dryers have a safety cut out switch which is activated by the temperature.
- The safety reset button is on the backboard. If your dryer is not heating, this button must be reset before the dryer can heat again. You may need to wait 10 minutes for it to cool down.
- The most common reason for the dryer overheating, is a blocked filter.
- Clean the line filter after each load to prevent overheating of the dryer

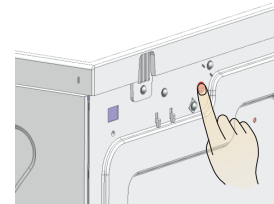
#### The cut out switch may operate for the following reasons:

- The lint filter is blocked.
- The exhaust outlets are blocked at the back of the dryer.
- Poor ventilation in the laundry or room; open a window or door
- Lightweight garment eg. handkerchief, sucked onto the filter.

## MAINTENANCES

#### Safety Reset Button

Use your finger or a pencil to press the button in until you feel it click.



### ■ Trouble Shooting

Trouble	Cause	Solution
Will not start	<ul style="list-style-type: none"> <li>• Power cut.</li> <li>• The power plug is not plugged in securely.</li> <li>• Dry clothes exceed the maximum load.</li> <li>• The temperature fuse is cut.</li> </ul>	<ul style="list-style-type: none"> <li>• Wait for or turn on the electricity, check trip switch.</li> <li>• Check the power socket, make sure the plug is in tight.</li> <li>• The clothes in dryer must be after a spin cycle in the washing machine and can not exceed 7kg.</li> <li>• Replace the fuse.</li> </ul>
Hot service or burning smell	<ul style="list-style-type: none"> <li>• The lint filter is dirty.</li> <li>• The uptake or exhaust duct is dirty.</li> </ul>	<ul style="list-style-type: none"> <li>• Clean out the lint filter sure clean the lint filter</li> <li>• Clean out uptake or exhaust duct.</li> </ul>
Clothes too dry	<ul style="list-style-type: none"> <li>• The machine is too full.</li> <li>• Clothes left in the dryer for a prolonged period</li> <li>• The temperature used is too high.</li> </ul>	<ul style="list-style-type: none"> <li>• Make sure not to over fill the machine.</li> <li>• Make sure that you take out the clothes immediately when finish.</li> <li>• Observe the maintenance label on clothes.</li> </ul>
Clothes shrink	<ul style="list-style-type: none"> <li>• The temperature used was too high dry.</li> </ul>	<ul style="list-style-type: none"> <li>• Observe the maintenance label on clothes.</li> <li>• Take out the clothes when still a little damp before they become too dry, then hang the clothes until fully dry.</li> </ul>
Lint on clothes	<ul style="list-style-type: none"> <li>• Fabrics can develop lint balls do to excessive friction.</li> </ul>	<ul style="list-style-type: none"> <li>• Use fabric softener when washing your clothes. Turn the garment inside out to reduce friction and rubbing to the front of the garment.</li> </ul>

## MAINTENANCES

- Do not be alarmed if your dryer makes noise while running  
This is due to heavy wet clothes turning and bumping during the drying cycle and this will cause noise accordingly.

Error code	Description	Criteria	Action after fault debounced
E36	Temperature Sensor error	Temperature sensor is open or short	Stop the programme and go to fault state

## ■ Technical Specifications

Model	TDV70WH
Parameter	
Dimension (L*W*H)	555*595*840(mm)
Rated input power	2000W
Rated voltage	220-240V~
Rated frequency	50Hz
Weight of product	33kg
Rated capacity	7.0kg
Ambient temperature	+5°C~+35°C

### Note!

- The rated capacity is the maximum capacity, make sure that the dry clothes which are loaded to the appliance do not exceed the rated capacity each
- Do not install the tumble dryer in a room which the temperature is around freezing point, as it will have a risk of frost occurring, the tumble dryer may not be able to operate well.

## MAINTENANCES

### ■ Product Fiche

Model	TDV70WH
Rated Capacity	7kg
Dryer Type	Air-Vented
Energy efficiency class	C
Weighted annual energy consumption (AE <sub>c</sub> ) <sup>1</sup>	519.7Wh / year
Automatic or non-automatic	Automatic
EU Ecolabel	N/A
Energy consumption of the standard cotton programme	
Energy consumption of the standard cotton programme at full load	4.44kWh
Energy consumption of the standard cotton programme at partial load	2.31kWh
Power consumption of the off-mode (Po)	0.46 W
Power consumption of the left-on mode (Pl)	0.48 W
Duration of the left-on mode	10 min
Programme time of the 'Standard Cotton programme'	
Weighted programme time of the standard cotton programme at full and partial load	105min
Programme time of the standard cotton programme at full load	145min
Programme time of the standard cotton programme at partial load	75min
Sound power level for the standard cotton programme at full load	69dB

#### Remarks:

- Energy consumption per year, based on 160 drying cycles of the standard cotton programme at full and partial load, and the consumption of the low-power modes. Actual energy consumption per cycle will depend on how the appliance is used.